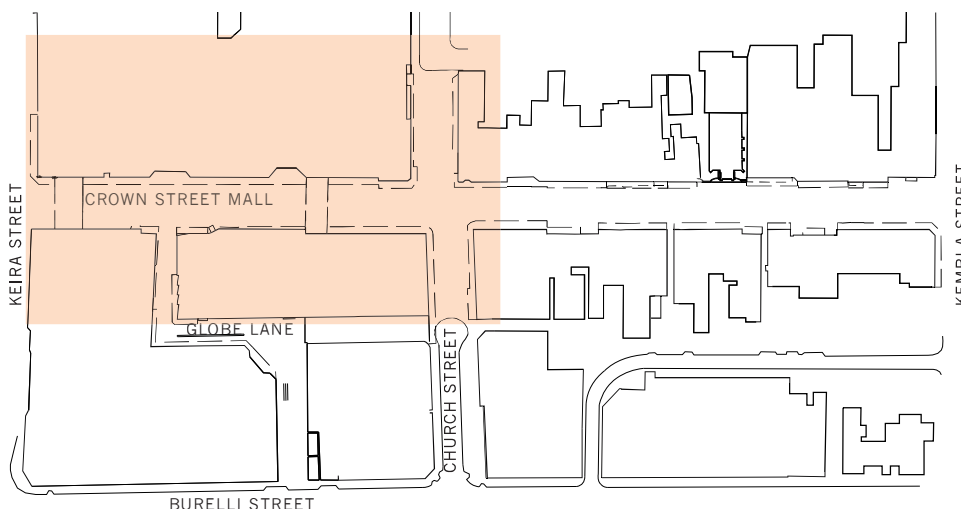


KEY PLAN



PROPOSED LANDSCAPE PLAN

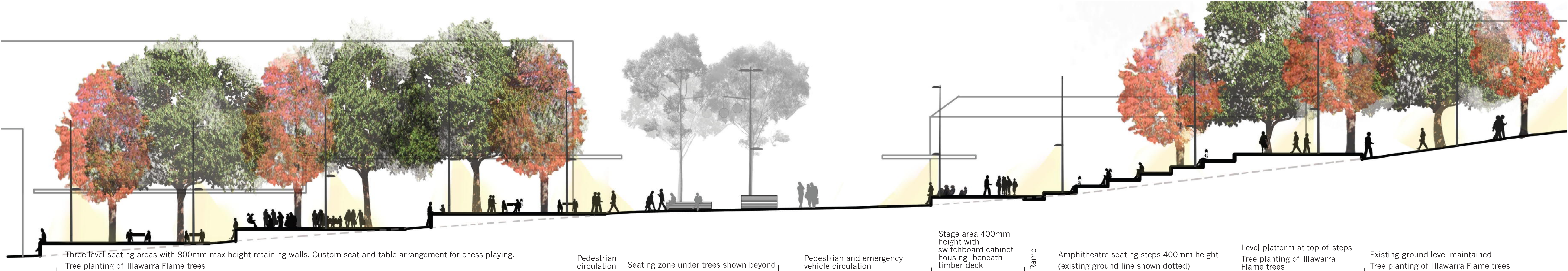
LEGEND

- Hardworks, Paving + walling**
- 1 Stone paving units 450,350 and 160mm width (length varies) laid perpendicular across the street. Dark grey and light grey tones with different textured finish.
 - 2 Stone sett paving 150 x 150 x 40mm units to Church Street
 - 3 Emergency vehicle access 5m width to Crown Street Mall and Church Street South
 - 4 Emergency vehicle access 4m width to Church Street North
 - 5 Church Square - primary location for Friday markets
 - 6 Open air amphitheatre to Church Street stage area 45m² x 400mm height with switchboard cabinet housing beneath timber deck. Temporary canopy during performances.
 - 7 Church Street Amphitheatre seating: 7 no. bleacher seats 400mm high
 - 8 Access steps 150 x 300mm
 - 9 Ramp access to first level bleacher seating
 - 10 Stainless steel handrail to amphitheatre steps
 - 11 Stainless steel tactile indicators at top and bottom of amphitheatre
- Furniture + Lighting**
- 12 8m high column with street lighting, floodlight, CCTV banners and speakers
 - 13 8m high column with street lighting, floodlight and decorative lantern lighting mounted on outreach arms
 - 14 Floodlighting to Wesley Church frontage
 - 15 All Weather and Equal Access zone (min 3m)
 - 16 Custom benches: timber slats + steel frame (20 no.) with cavity in base allowing for power outlets
 - 17 Custom seats with backrest: timber slats + steel frame (20 no.) with cavity in base allowing for power outlets
 - 18 Custom seat and table arrangement: timber slats + steel frame (10 no.)
 - 19 Custom seat and table arrangement to Church Street for chess playing (5 no.)
 - 20 Custom bench and tree grate to Church Square: timber slats and steel frame (3 no.)
 - 21 Low retaining wall to seating area
 - 22 Access steps 150 x 300mm
 - 23 Stainless steel tactile indicators
 - 24 Stainless steel handrail to steps
 - 25 Outdoor cafe seating zone: Gloria Jeans Cafe
 - 26 Outdoor cafe seating zone: Cino Cafe
 - 27 Outdoor cafe seating zone: Aussie Cuisine
 - 28 Outdoor cafe seating zone: Soprano's on the Mall
 - 29 Outdoor cafe seating zone: BJ's on the Mall
 - 30 Potential location of future cafe seating/ outdoor dining areas
 - 31 Water feature incorporating interactive sequenced jets for Children's play. Operated via timer system that would be turned off for market days and key events.
 - 32 Waterwise control centre including filter pump for water feature
 - 33 Musical stepping plates for Children's play set into paving
 - 34 Stainless steel bike racks: 3 locations
- Services**
- 35 400mm wide linear trench grate over existing stormwater pipe to collect stormwater over the length of the mall
 - 36 100mm wide secondary trench grates at 8m centres including irrigation system using recycled and filtered stormwater to tree planting
 - 37 Potential location of tanks collecting stormwater runoff for re-use in irrigation
- Trees and planting**
- 38 84 x advanced (800ltr) Spotted Gum (*Corymbia maculata*) in structural soil trench system
 - 39 14 x advanced (800ltr) Illawarra Flame Tree (*Brachychiton acerifolius*) in structural soil pit system
 - 40 Retain and protect Wallangara White Gum

Existing tree to be removed

Existing spot level

Proposed level



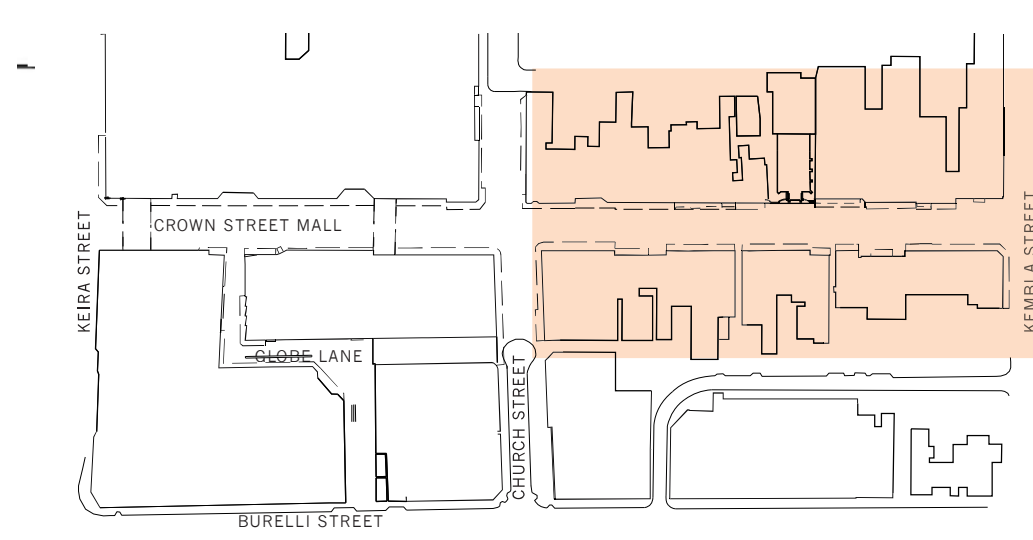
PROPOSED CROSS SECTION THROUGH CHURCH STREET SCALE 1:100 @ A0

CROWN STREET MALL
REDEVELOPMENT -
WOLLONGONG

DEVELOPMENT APPLICATION

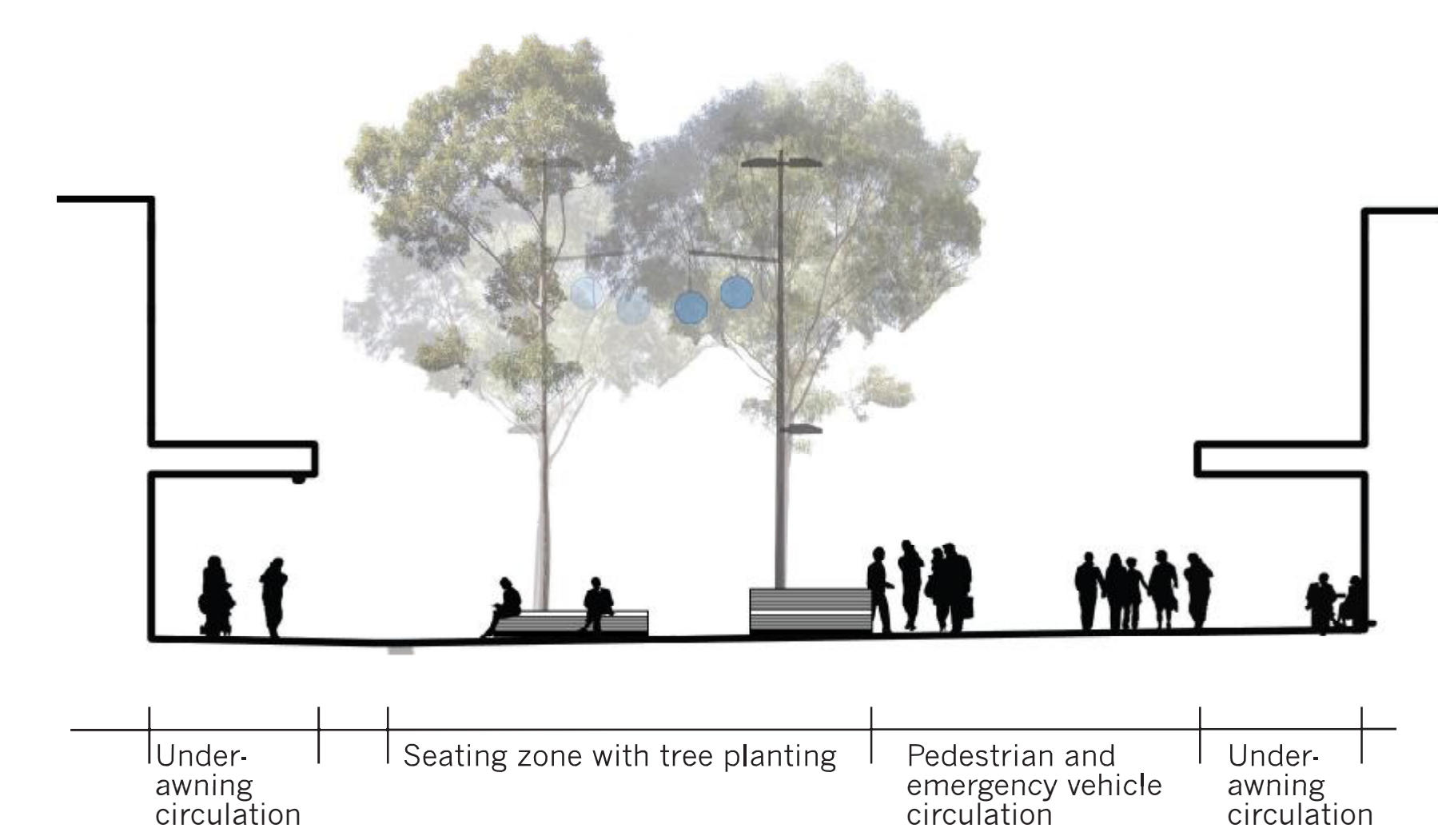
DRAWING DAL01 DATE 19.04.11

KEY PLAN

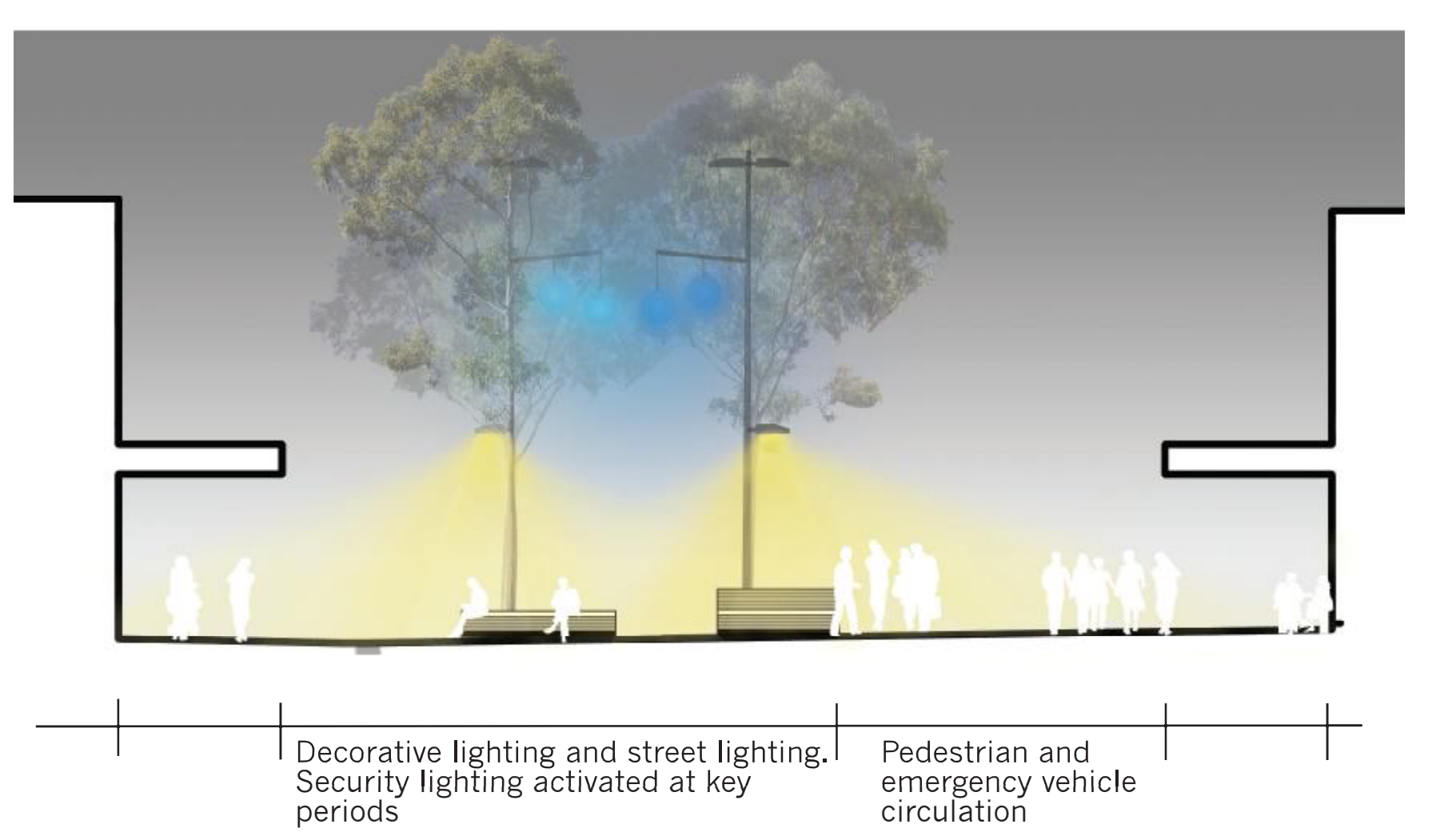


PROPOSED LANDSCAPE PLAN

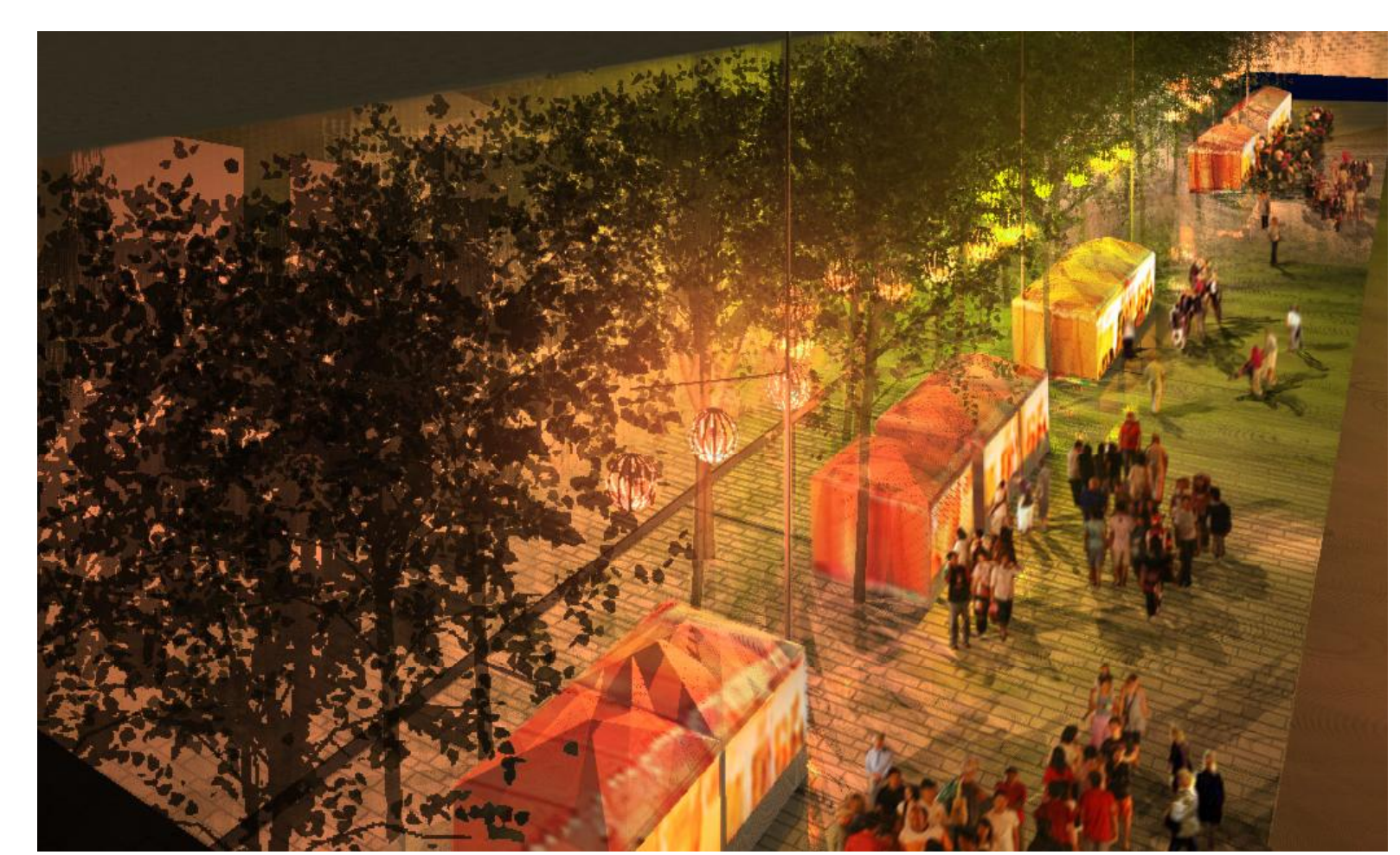
- LEGEND**
- Hardworks, Paving + walling**
- 1 Stone paving units 450,350 and 160mm width (length varies) laid perpendicular across the street. Dark grey and light grey tones with different textured finish.
 - 2 Stone sett paving 150 x 150 x 40mm units to Church Street
 - 3 Emergency vehicle access 5m width to Crown Street Mall and Church Street South
 - 4 Emergency vehicle access 4m width to Church Street North
 - 5 Church Square - primary location for Friday markets
 - 6 Open air amphitheatre to Church Street stage area 45m² x 400mm height with switchboard cabinet housing beneath timber deck. Temporary canopy during performances.
 - 7 Church Street Amphitheatre seating: 7 no. bleacher seats 400mm high
 - 8 Access steps 150 x 300mm
 - 9 Ramp access to first level bleacher seating
 - 10 Stainless steel handrail to amphitheatre steps
 - 11 Stainless steel tactile indicators at top and bottom of amphitheatre
- Furniture + Lighting**
- 12 8m high column with street lighting, floodlight, CCTV banners and speakers
 - 13 8m high column with street lighting, floodlight and decorative lantern lighting mounted on outreach arms
 - 14 Floodlighting to Wesley Church frontage
 - 15 All weather and Equal Access zone (min 3m)
 - 16 Custom benches: timber slats + steel frame (20 no.) with cavity in base allowing for power outlets
 - 17 Custom seats with backrest: timber slats + steel frame (20 no.) with cavity in base allowing for power outlets
 - 18 Custom seat and table arrangement: timber slats + steel frame (10 no.)
 - 19 Custom seat and table arrangement to Church Street for chess playing (5 no.)
 - 20 Custom bench and tree grate to Church Square: timber slats and steel frame (3 no.)
 - 21 Low retaining wall to seating area
 - 22 Access steps 150 x 300mm
 - 23 Stainless steel tactile indicators
 - 24 Stainless steel handrail to steps
 - 25 Outdoor cafe seating zone: Gloria Jeans Cafe
 - 26 Outdoor cafe seating zone: Cino Cafe
 - 27 Outdoor cafe seating zone: Aussie Cuisine
 - 28 Outdoor cafe seating zone: Soprano's on the Mall
 - 29 Outdoor cafe seating zone: BJ's on the Mall
 - 30 Potential location of future cafe seating/ outdoor dining areas
 - 31 Water feature incorporating interactive sequenced jets for Children's play. Operated via timer system that would be turned off for market days and key events.
 - 32 Waterwise control centre including filter pump for water feature
 - 33 Musical stepping plates for Children's play set into paving
 - 34 Stainless steel bike racks: 3 locations
- Services**
- 35 400mm wide linear trench grate over existing stormwater pipe to collect stormwater over the length of the mall
 - 36 100mm wide secondary trench grates at 8m centres including irrigation system using recycled and filtered stormwater to tree planting
 - 37 Potential location of tanks collecting stormwater runoff for re-use in irrigation
- Trees and planting**
- 84 x advanced (800ltr) Spotted Gum (*Corymbia maculata*) in structural soil trench system
 - 14 x advanced (800ltr) Illawarra Flame Tree (*Brachychiton acerifolius*) in structural soil pit system
 - 38 Retain and protect Wallangarra White Gum
- Existing tree to be removed
- Existing spot level
- Proposed spot level



PROPOSED CROSS SECTION THROUGH CROWN STREET - BY DAY



PROPOSED CROSS SECTION THROUGH CROWN STREET - BY NIGHT



ARTISTS IMPRESSION OF NIGHT MARKETS



ARTISTS IMPRESSION OF WATER PLAY